

CYBER AWARENESS GAME

MiniBiz Hacked

DISCLAIMER

Copyright © European Union Agency for Cybersecurity (ENISA), 2024

This document and information contained in this document may be excerpted, copied, printed, republished, made available to the public by wire or wireless means and/or otherwise provided to third parties only under the condition that the source and copyright owner is clearly stated as follows:

“Source: ENISA Cyber Awareness Training Material, Copyright © European Union Agency for Cybersecurity (ENISA), 2024”. If you do republish we would be grateful if you link back to the ENISA website www.enisa.europa.eu. No part of this document, including any part of the information contained therein, in whichever format, whether digital or otherwise, may be altered, edited or changed without prior express and written permission of the European Union Agency for Cybersecurity (ENISA), to be requested via email to “access-documents@enisa.europa.eu”, clearly stating the element (document and/or information) and term of use requested.

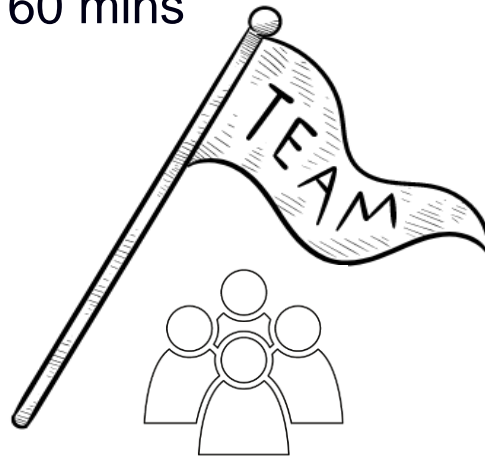
The present document is being distributed without warranty of any kind, either express or implied in relation to its content and/or use and the views expressed herein do not necessarily represent the opinions or the stated policy of ENISA. To the extent permitted by the applicable law, ENISA shall not be liable for any damages arising from the content and use of the present document.

Game Rules

- Introduce game and instructions
- Create teams or Play Individually
 - Choose a Team Leader
 - Choose a Team Name
- Distribute clues to each team
- Discuss your Solution
- Game total duration: 60 mins



Option - Quiz



1 - 4 people per team

Unlimited number of teams



SCENARIO – MINIBIZ HACKED



MiniBiz has suffered a CEO fraud and ransomware attack. The initial hack appeared to take place early September, but it went unnoticed till the 10th of September 2024, when the bank accounts of the MiniBiz were emptied and its systems blocked.

Attackers appeared to have gained initial access via a successful **VISHING and/or SMISHING and/or PHISHING ATTACK**.

To make matters worse **FRAUDULENT PAYMENT** was made in MiniBiz and a **RANSOMWARE** hit the company the same day.

You are the lead Cyber Security Investigator recruited to provide answers on who is behind the hack and try to stop him/her before further damage occur.

We gathered as much evidence as possible. Analyze them quickly.

The attackers claim that they will wipe all data if we don't pay.

GOOD LUCK!

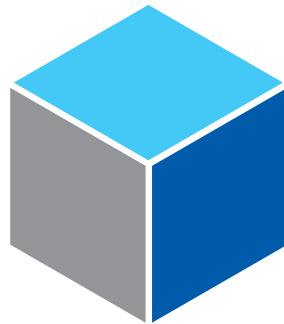
SCENARIO – MINIBIZ PROFILE

- MiniBiz is a technology company that specialises in website development. It has less than 75 employees. Maria is MiniBiz CEO.
- Maria main concerns is to deliver quality service and built customer loyalty. She deals with personal data, employee personal data, accounting software and client data.
- She uses emails, SaaS solutions for development and static webpage where she indicates her services, team, projects and contact information
- Risks she is aware of: phishing, ransomware, weak passwords
- IT resources: development tools, office collaboration tools, on prem servers, antivirus, accounting software, web dev software.
- Challenges: Limited broadband capacity on the corporate network, prompting staff to use personal devices/email when travelling or working from home.
- MiniBiz never had security issues but is concerned about ransomware as Maria heard about friends losing their data. She doesn't believe she would lose client data as it is deployed at client servers after project completion, nor accounting data as an external accountant is taking care of it.



EMAIL ATTACK

PHASE 1



TASK UPDATE #1

Several **suspicious emails** have been recovered while investigating the hack.

Your task is to go through the **communications of various individuals and identify the perpetrator and possible victims.**

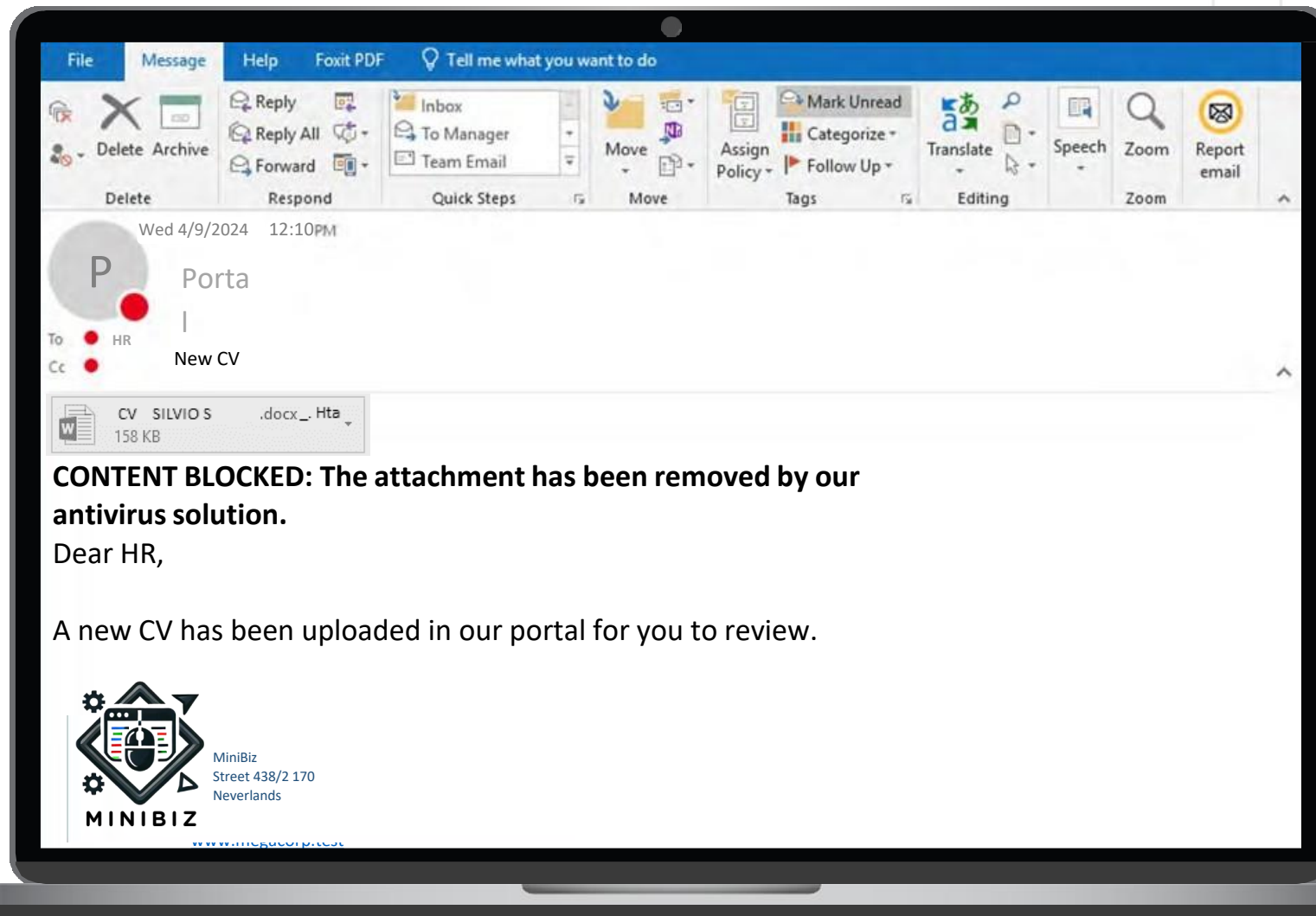
It is believed, based on our analysis, that the attacks **started from a single attack - a social engineering with an email.** That's how the hackers got access to the **MiniBiz internal systems.**

We count on you to perform the analysis as fast as possible.

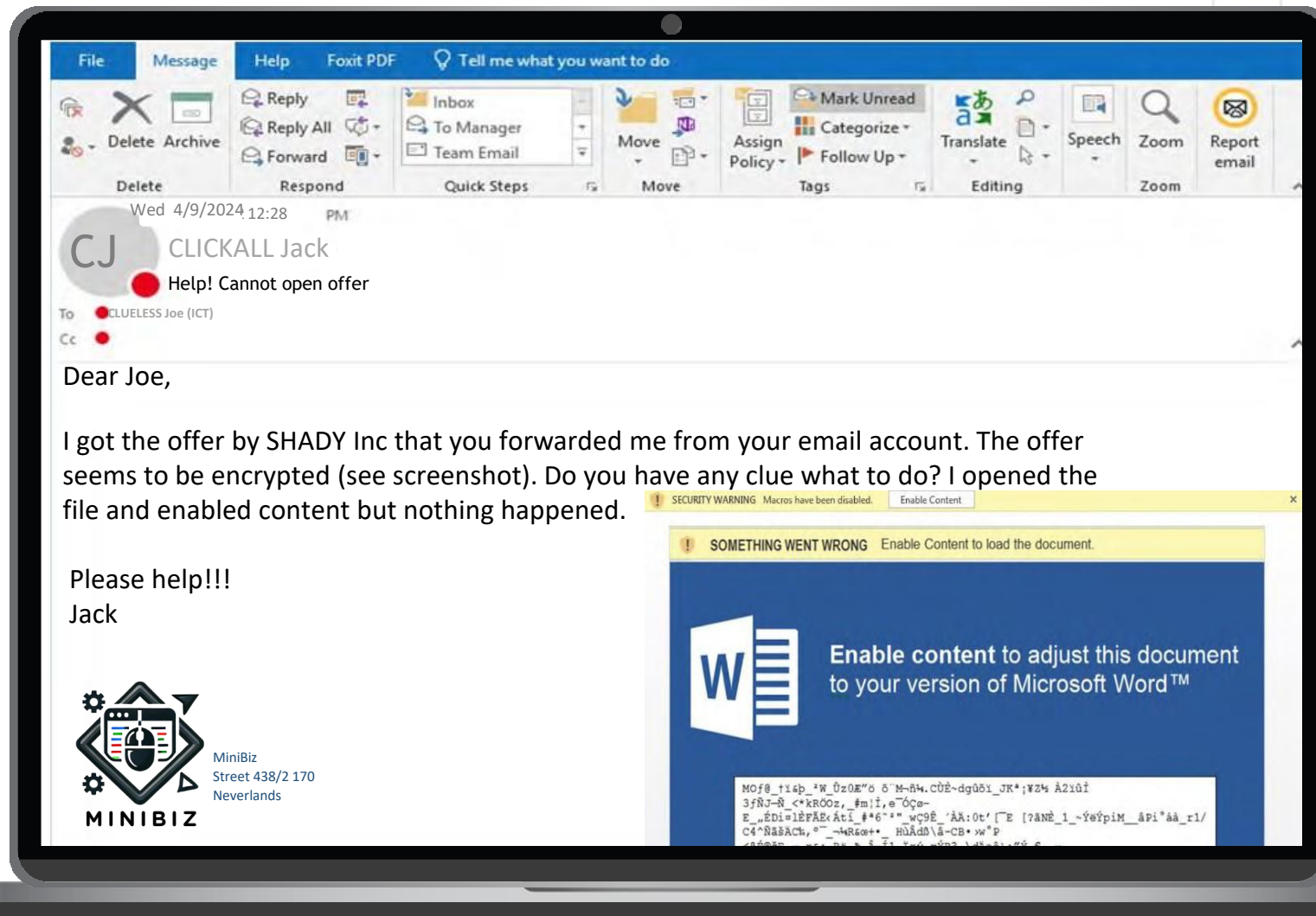
Good Luck,
The Management



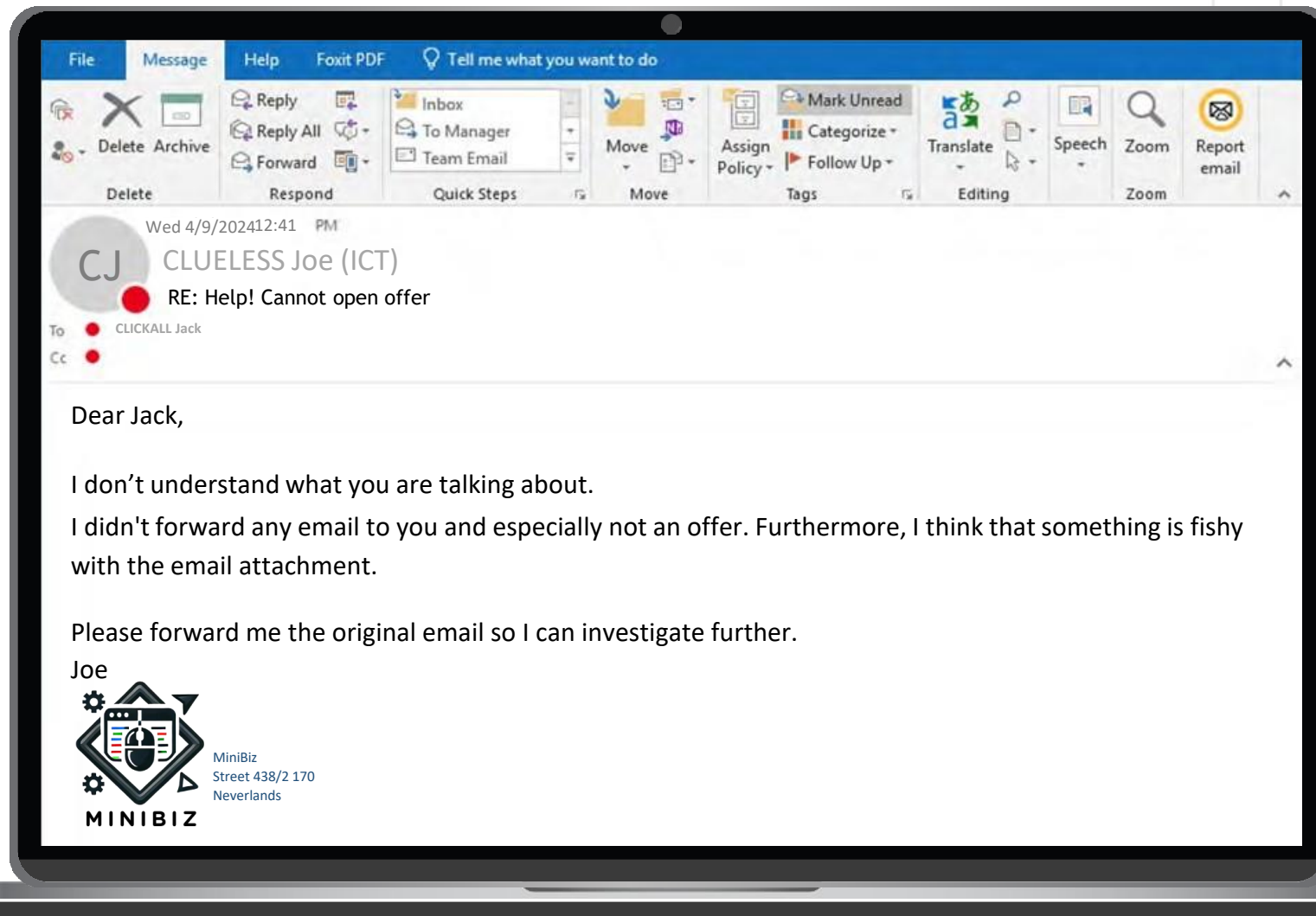
SUSPICIOUS MAIL



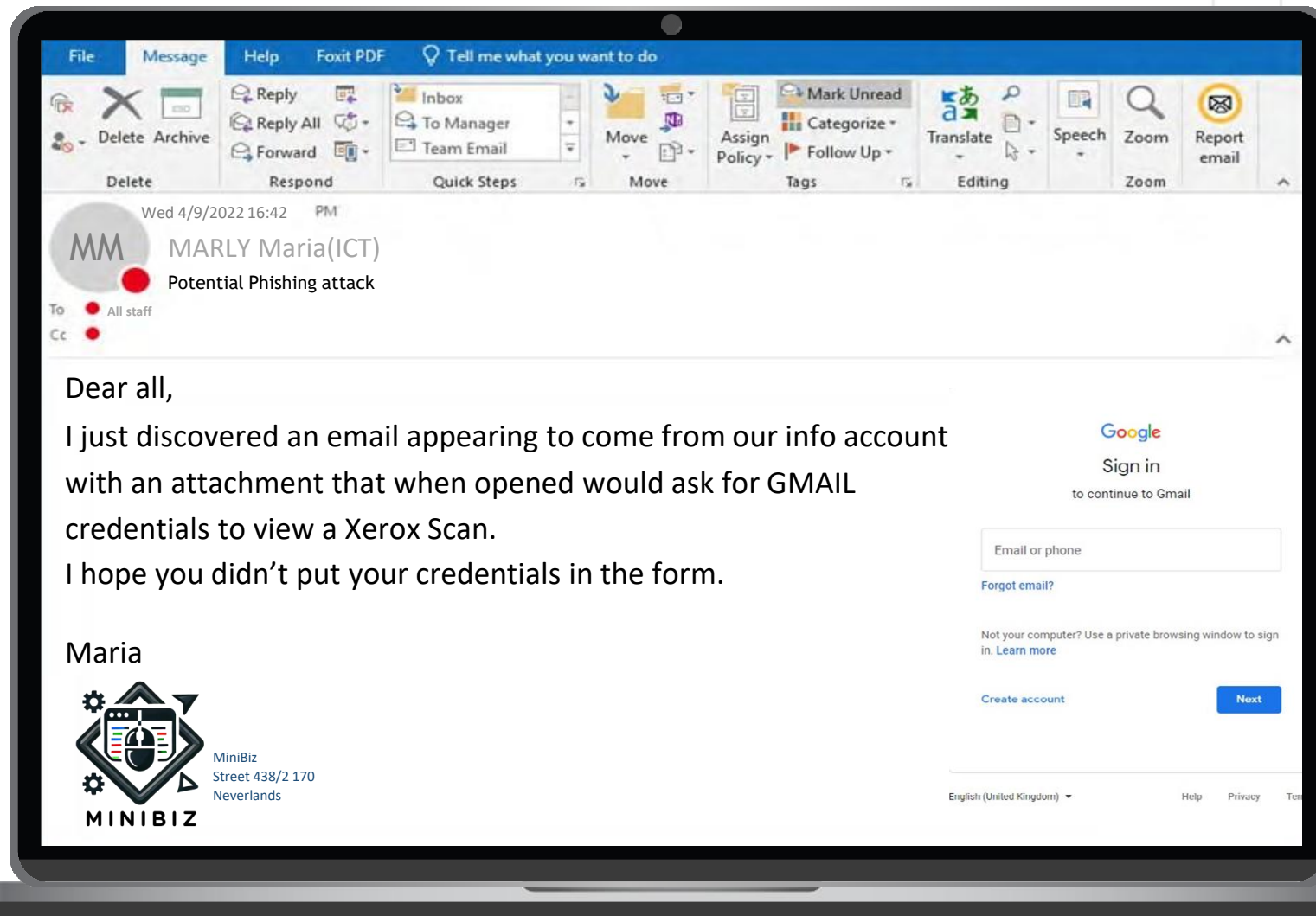
SUSPICIOUS MAIL



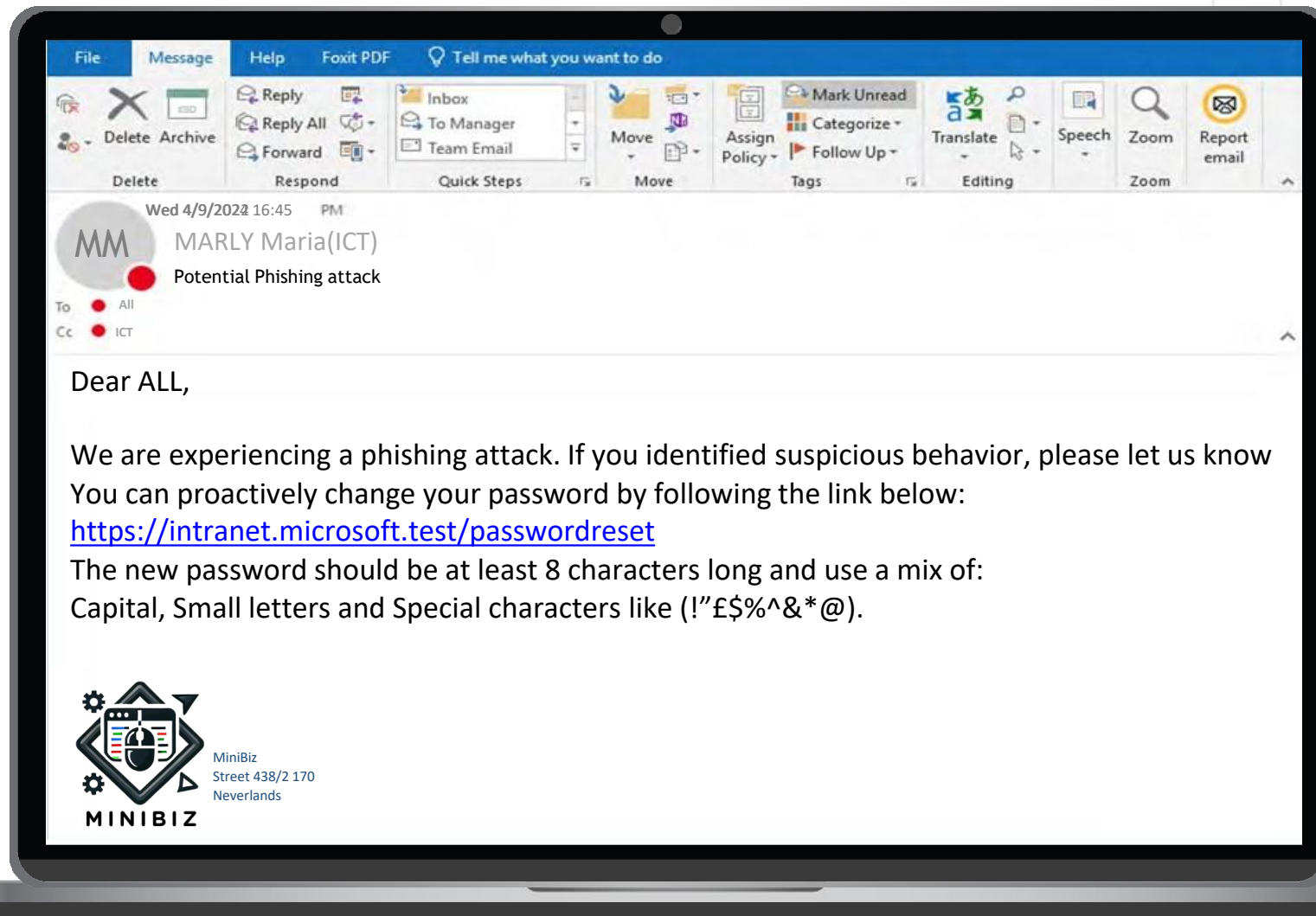
SUSPICIOUS MAIL



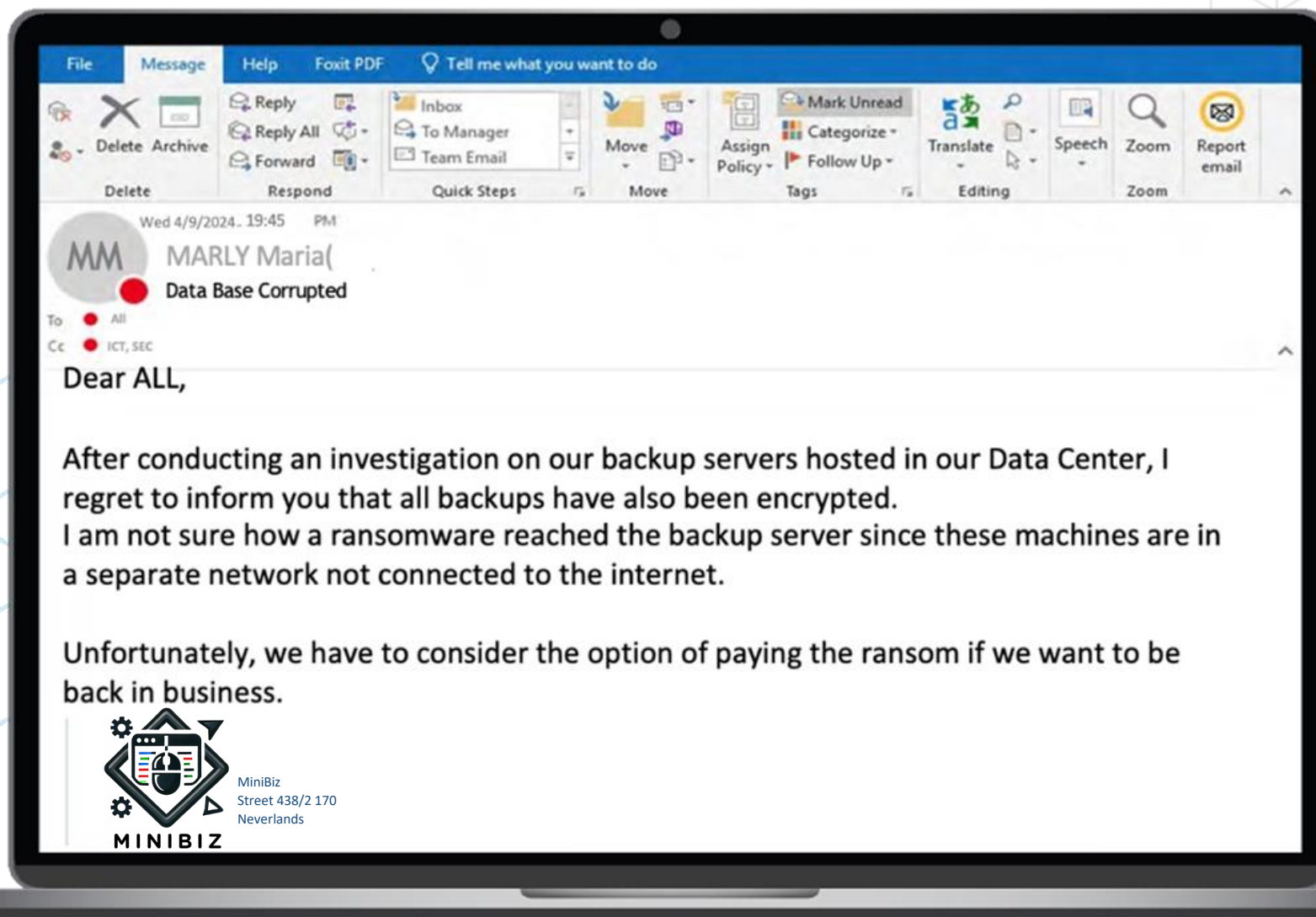
SUSPICIOUS MAIL



SUSPICIOUS MAIL



SUSPICIOUS MAIL



ACTION TIME

Based on your experience can you please draft some answers on the following questions:

Q1. Which type of attack most likely took place?

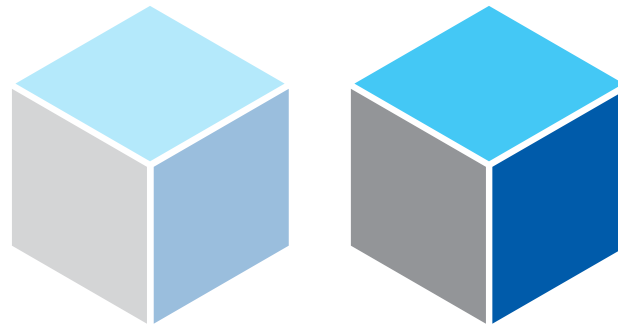
Q2. Can you explain the attackers' steps so far?

Q3. Was the potential incident handled correctly?



PHONE ATTACK

PHASE 2



TASK UPDATE #2

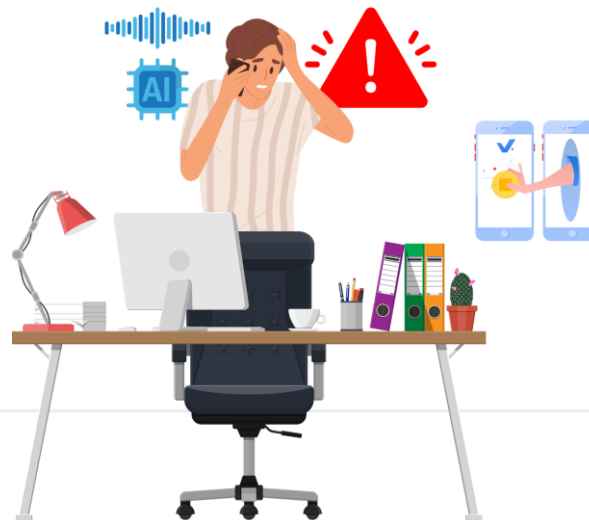
Several phone records have been recovered while investigating the hack.

Your task is to **go through the communications** of **the victim** and **identify the perpetrator and identity of the victim**.

It is believed, based on our analysis, that the **attack was a complex a social engineering, using either an email or SMS or voice call, or combination of all the above methods**. That's how the hackers **initiated a fraudulent payment**.

We count on you to perform the analysis **fast**.

Good Luck,
The Management



FULL EMPLOYEES LIST

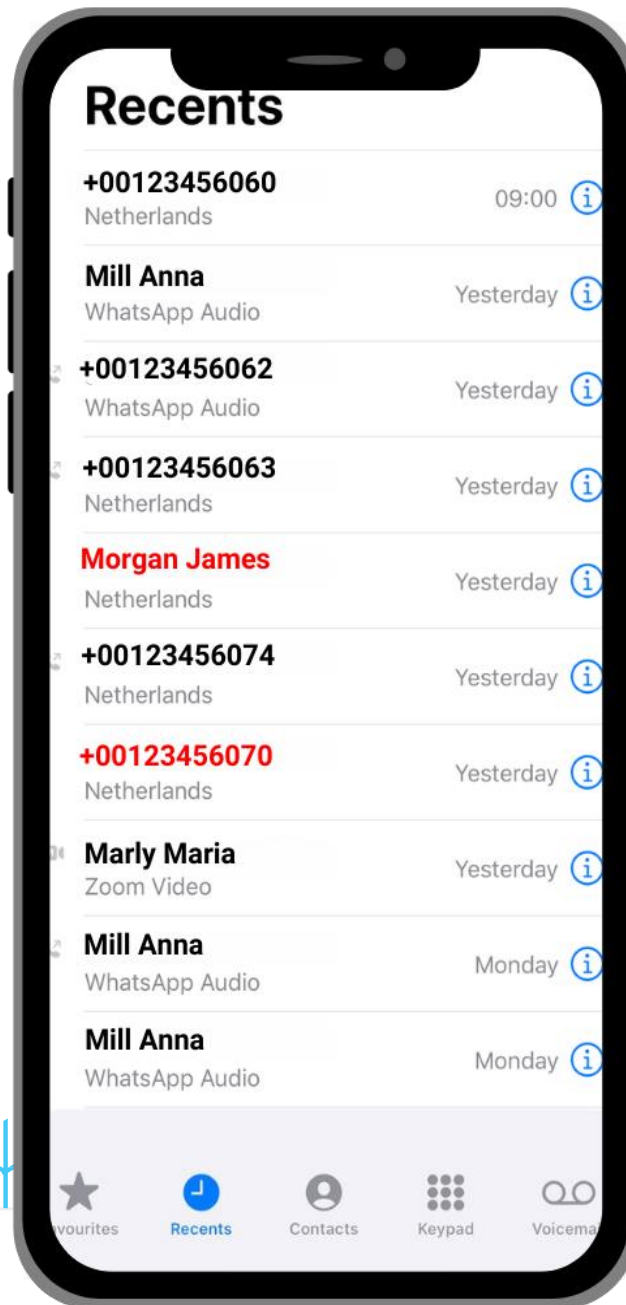
Phone number	Name	Role
+00123456060	Marly Maria	CEO
+00123456061	Clickall Jack	Office Manager
+00123456062	Clueless Joe	ICT
+00123456063	Mill Anna	Sales
+00123456064	Darc Marc	Sales
+00123456065	Marly John	Sales
+00123456066	Elton Jack	Marketing
+00123456067	Morgan Monica	Developer
+00123456068	Lee Kim	Trainee
+00123456069	Cross Michael	Developer
+00123456070	Dollar Sam	Developer
+00123456071	Prince Stan	Developer
+00123456072	Maze Luke	Developer
+00123456073	Jasper Joanne	Developer
+00123456074	Frank Alex	Project Manager



SOCIAL ENGINEERING



SUSPICIOUS PHONE LOGS



VISHING ATTACK

SUSPICIOUS PHONE LOGS



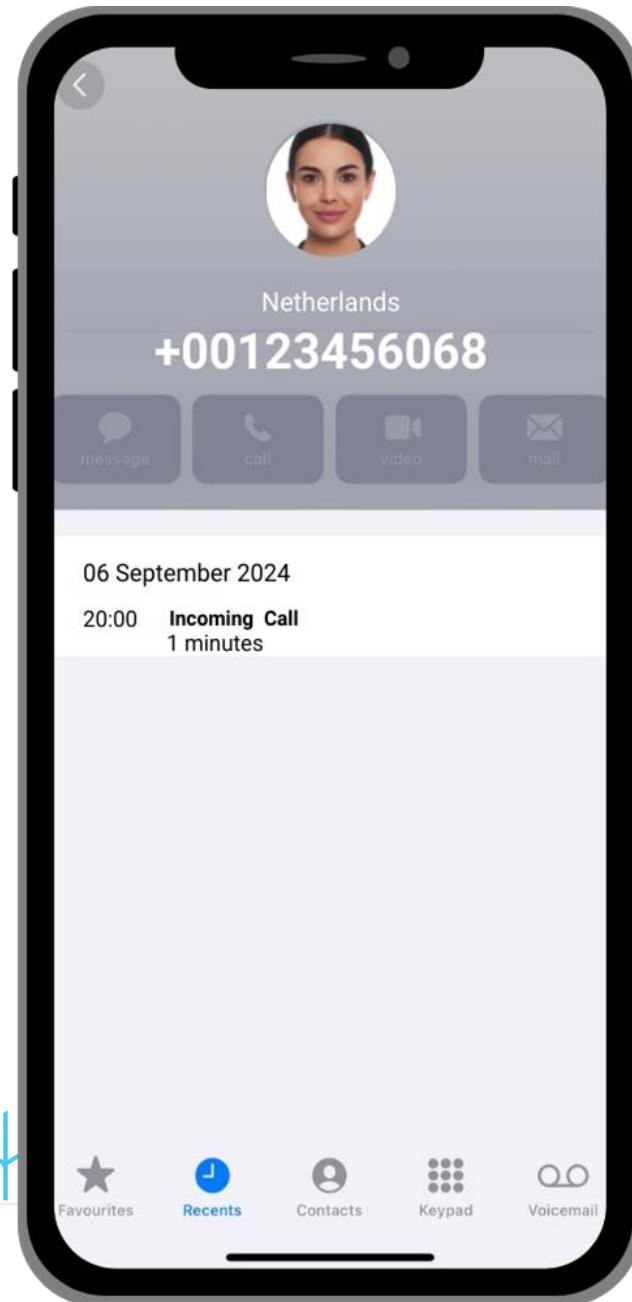
VISHING ATTACK

SUSPICIOUS PHONE LOGS



VISHING ATTACK

SUSPICIOUS PHONE LOGS

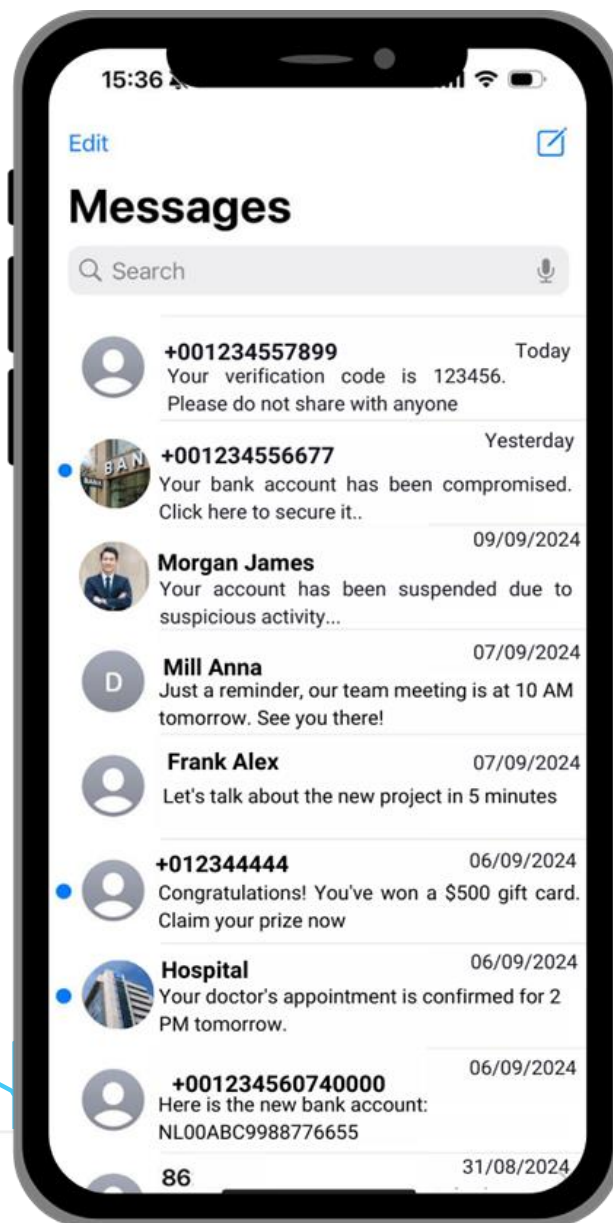


VISHING ATTACK

SUSPICIOUS PHONE LOGS



SMISHING ATTACK



ACTION TIME

Based on your experience can you please draft some answers on the following questions:

Q4. Which type of attack most likely took place?

Q5. Can you explain the attackers' steps so far?

Q6. Was the payment initiation process defined correctly?



UNAUTHORISED ACTIVITY

PHASE 3



TASK UPDATE #3

Suspicious activity has been detected in **MiniBiz**. We believe the recent hacks might be the work of an **INSIDER**.

The access logs from the supposed date of the hack have been recovered along with relevant HR information. **Dig into the logs to identify the SECURITY breach that led to the ransomware infection.** We count on you to perform the analysis as fast as possible.

Good Luck!
The Management



ICT SYSTEM ACCESS LOGS – MINIBIZ

Name	Activity	Date	TIME
Mill Anna	Login	04/09/2024	8:30
Clueless Joe	Login	04/09/2024	8:38
Clickall Jack	Login	04/09/2024	9:00
Darc Marc	Login	04/09/2024	9:05
Darc Marc	Password update	04/09/2024	12:20
Clueless Joe	High privilege activated	04/09/2024	13:48
Marly Maria	Login	04/09/2024	14:00
Mill Anna	Logout	04/09/2024	16:45
Marly Maria	Logout	04/09/2024	17:03
Marly Maria	Logout	04/09/2024	17:08
Darc Marc	Logout	04/09/2024	17:58
Marly Maria	Password reset	04/09/2024	17:59
Mill Anna	Failed authentication	04/09/2024	18:01
Mill Anna	Login	04/09/2024	18:04
Clickall Jack	Logout	04/09/2024	18:20
Clueless Joe	Logout	04/09/2024	18:30



UNAUTHORISED ACTIVITY



ACTION TIME

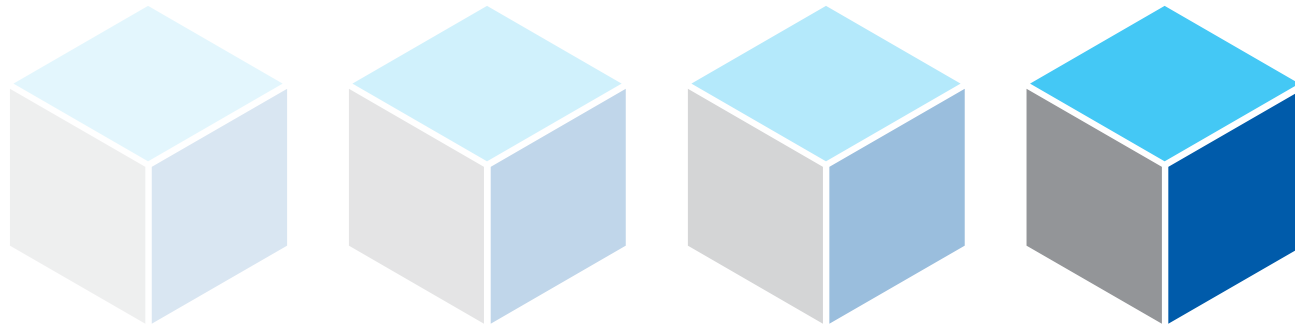
Based on your experience can you please draft some answers on the following questions:

- Q7.** What could have been a measure taken that could have saved your data for the scenario presented, making paying the ransom obsolete?
- Q8.** What would be the correct steps to follow in case of a **suspected** hack (identity compromise)?
- Q9.** What would be the steps to follow in case of a **ransomware claim** against your company?

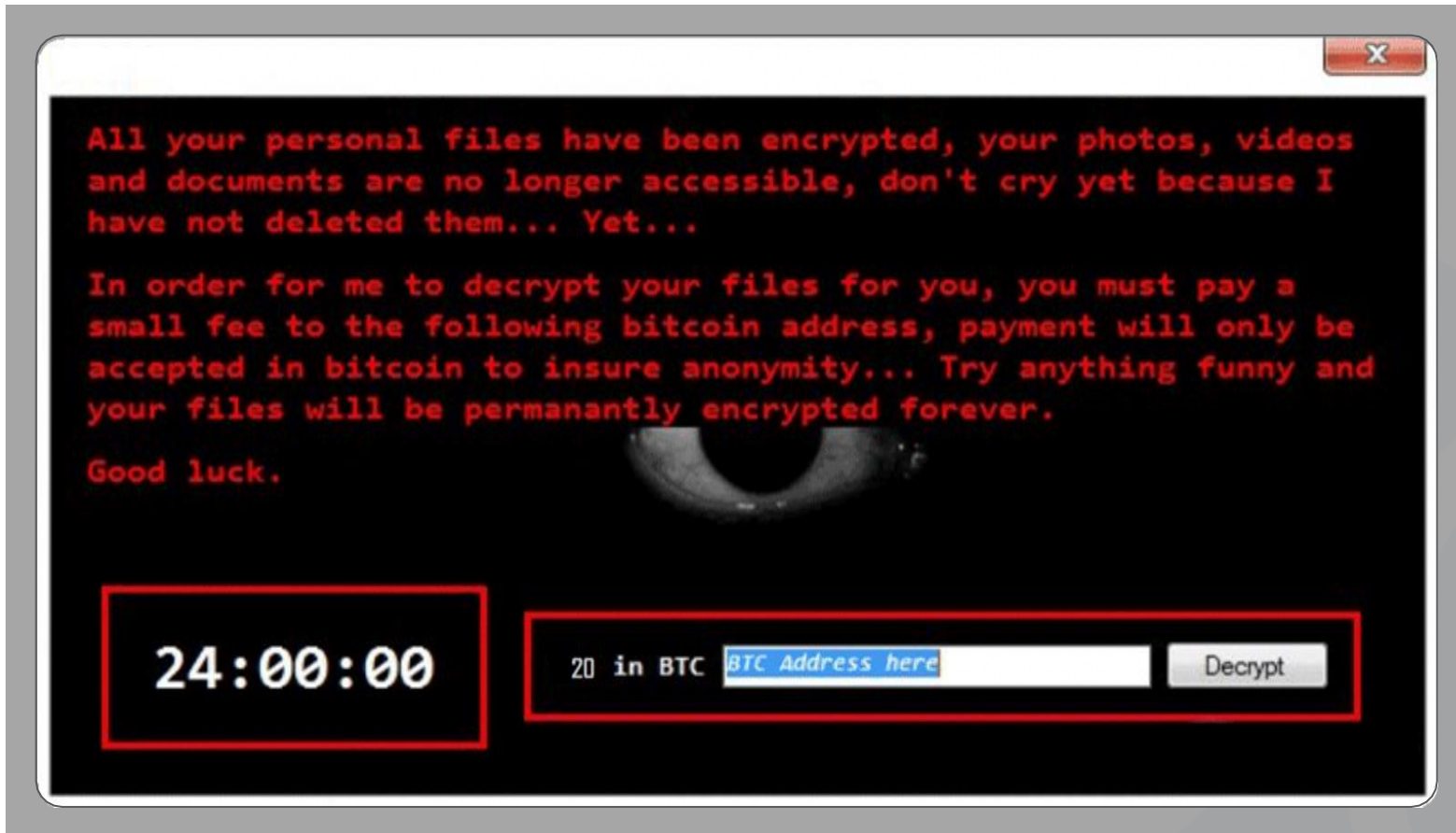


RANSOMWARE

PHASE 4



THE RANSOMWARE NOTE



File to unlock:



UPKWBPWEW.db

Decrypt the FILENAME using the correct key



HOW DOES VIGENERE WORK

— EXAMPLE

To encrypt:

SECRET PHRASE

Key:

LOCKME

ENCRYPTION MECHANISM:

S E C R E T P H R A S E
 L O C K M E L O C K M E
 D S E B Q X A V T K E I

To decrypt:

DSEBQXAVTKEI

Key:

LOCKME

DECRYPTION MECHANISM:

L O C K M E L O C K M E
 D S E B Q X A V T K E I
 S E C R E T P H R A S E

	A	B	C	D	E	F	G	H	I	J	K	L	M	N	O	P	Q	R	S	T	U	V	W	X	Y	Z
A	A	B	C	D	E	F	G	H	I	J	K	L	M	N	O	P	Q	R	S	T	U	V	W	X	Y	Z
B	B	C	D	E	F	G	H	I	J	K	L	M	N	O	P	Q	R	S	T	U	V	W	X	Y	Z	A
C	C	D	E	F	G	H	I	J	K	L	M	N	O	P	Q	R	S	T	U	V	W	X	Y	Z	A	B
D	D	E	F	G	H	I	J	K	L	M	N	O	P	Q	R	S	T	U	V	W	X	Y	Z	A	B	C
E	E	F	G	H	I	J	K	L	M	N	O	P	Q	R	S	T	U	V	W	X	Y	Z	A	B	C	D
F	F	G	H	I	J	K	L	M	N	O	P	Q	R	S	T	U	V	W	X	Y	Z	A	B	C	D	E
G	G	H	I	J	K	L	M	N	O	P	Q	R	S	T	U	V	W	X	Y	Z	A	B	C	D	E	F
H	H	I	J	K	L	M	N	O	P	Q	R	S	T	U	V	W	X	Y	Z	A	B	C	D	E	F	G
I	I	J	K	L	M	N	O	P	Q	R	S	T	U	V	W	X	Y	Z	A	B	C	D	E	F	G	H
J	J	K	L	M	N	O	P	Q	R	S	T	U	V	W	X	Y	Z	A	B	C	D	E	F	G	H	I
K	K	L	M	N	O	P	Q	R	S	T	U	V	W	X	Y	Z	A	B	C	D	E	F	G	H	I	J
L	L	M	N	O	P	Q	R	S	T	U	V	W	X	Y	Z	A	B	C	D	E	F	G	H	I	J	K
M	M	N	O	P	Q	R	S	T	U	V	W	X	Y	Z	A	B	C	D	E	F	G	H	I	J	K	L
N	N	O	P	Q	R	S	T	U	V	W	X	Y	Z	A	B	C	D	E	F	G	H	I	J	K	L	M
O	O	P	Q	R	S	T	U	V	W	X	Y	Z	A	B	C	D	E	F	G	H	I	J	K	L	M	N
P	P	Q	R	S	T	U	V	W	X	Y	Z	A	B	C	D	E	F	G	H	I	J	K	L	M	N	O
Q	Q	R	S	T	U	V	W	X	Y	Z	A	B	C	D	E	F	G	H	I	J	K	L	M	N	O	P
R	R	S	T	U	V	W	X	Y	Z	A	B	C	D	E	F	G	H	I	J	K	L	M	N	O	P	Q
S	S	T	U	V	W	X	Y	Z	A	B	C	D	E	F	G	H	I	J	K	L	M	N	O	P	Q	R
T	T	U	V	W	X	Y	Z	A	B	C	D	E	F	G	H	I	J	K	L	M	N	O	P	Q	R	S
U	U	V	W	X	Y	Z	A	B	C	D	E	F	G	H	I	J	K	L	M	N	O	P	Q	R	S	T
V	V	W	X	Y	Z	A	B	C	D	E	F	G	H	I	J	K	L	M	N	O	P	Q	R	S	T	U
W	W	X	Y	Z	A	B	C	D	E	F	G	H	I	J	K	L	M	N	O	P	Q	R	S	T	U	V
X	X	Y	Z	A	B	C	D	E	F	G	H	I	J	K	L	M	N	O	P	Q	R	S	T	U	V	W
Y	Y	Z	A	B	C	D	E	F	G	H	I	J	K	L	M	N	O	P	Q	R	S	T	U	V	W	X
Z	Z	A	B	C	D	E	F	G	H	I	J	K	L	M	N	O	P	Q	R	S	T	U	V	W	X	Y



ANSWER SHEET

What is the name of the first known victim of the PHISING ATTACK?

[Surname Name as seen in the employee list without space*]

--	--	--	--	--	--	--	--	--	--	--	--	--	--

WHO MADE THE FRAUDULENT PAYMENT?

--	--	--	--	--	--	--	--	--	--	--	--	--	--

ENCRYPTION KEY

--	--	--	--	--	--	--	--	--	--

What is the filename of the decrypted file?

--	--	--	--	--	--	--	--	--	--

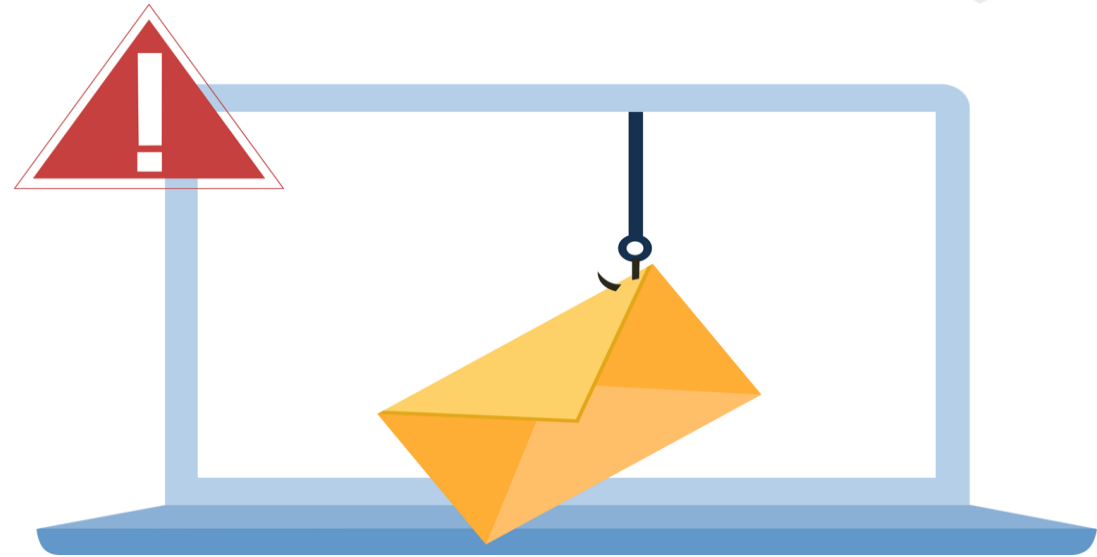
LESSONS LEARNT

PHASE 5



1. WHICH TYPE OF CYBER-ATTACK IS COMMONLY PERFORMED THROUGH EMAIL?

- A** Phishing
- B** Smishing
- C** Vishing
- D** Ransomware



Correct Answer

A Phishing

The term 'phishing' is used to describe a social engineering based cyber-attack that arrives mainly by email. Though email phishing is the most popular kind of phishing, other variants of this attacks can arrive by SMS (smishing), phone calls (vishing) or ransomware (digital kidnapping).

2. What clues a typical phishing email presents?

- A** There is a typographical error (e.g. 'www.yourbanc.com')
- B** The email address is not a professional email account, such as @company.com
- C** Requires an urgent action by clicking on a URL link
- D** It is something unexpected, e.g. an invoice you have not authorised or a package you have not ordered
- E** Any of the above

Correct Answer

A Any of the above

To recognize a phishing e/mail it is a good idea to ask yourself if the sender account is correct and authentic (matches the 'Name' and is corporate account), if it contains urgent and unexpected requests (if something urgent is requested from you, would they email it to you?), if the content is grammatically correct. In case you think there is something suspicious, never open or click on attached documents, do not send money to bank accounts and don't share personal data! If in doubt, contact directly the 'sender' through their official channel to verify the request.

3. WHAT KIND OF PASSWORD DO YOU THINK IS THE MOST SECURE FOR ACCOUNTS AND DEVICES?

- A** One word that is meaningful to the user
- B** A long list of random words combined with numbers and symbols
- C** A series of numbers, such as a telephone number, that is meaningful to the user
- D** A short, easy to remember combination of random words and symbols



Correct Answer



A long list of random words combined with numbers and symbols

The longer the password, the less likely it is to be hacked. Security experts suggest using a very long list of random words strung together. Bear in mind that `#&5%@>$` is no more difficult than "pancake" for a computer program to decipher, and most hackers don't try to figure out passwords on their own. Instead, they use software to try o steal passwords.

4. WHAT IS A GOOD EXAMPLE OF CYBER-HYGIENEPRACTICES?

A

Keep a clean desk, without sensitive information visible

B

Don't let the web browser save passwords

C

Don't use the personal mobile to handle professional information

D

A short, easy to remember combination of random words & symbols

E

All of the above



Correct Answer

E All of the above

When it comes to cyber-hygiene, it's about practicing routine cyber-cleaning habits in not just one, but several key cybersecurity areas: avoid phishing and email scams, protect data and devices, browse safely, keep systems updated and connect safely to public Wi-Fi networks.

5. YOU HAVE BEEN A VICTIM OF A RANSOMWARE ATTACK. WHAT SHOULD YOU DO FIRST?

- A** Discuss with the attacker to bargain the ransom
- B** Pay the ransom
- C** Quarantine affected systems, lock down access to backup systems until after the infection gets removed
- D** Do nothing



Correct Answer



Quarantine affected systems, lock down access to backup systems until after the infection gets removed

The goal is to remove the ransomware from infected systems, restore systems and files from a legitimate trusted site (ideally from backups), and patch vulnerabilities (if the ransomware has used such an entry vector).

6.WHAT KINDS OF RANSOMWARE EXIST?

- A** Encrypt, Delete
- B** Lock, Encrypt, Delete
- C** Lock, Encrypt, Delete, Steal
- D** Encrypt, Delete, Steal, Create



QUIZ

Correct Answer



WHAT KINDS OF RANSOMWARE EXIST?

Defined
through
their
capabilities

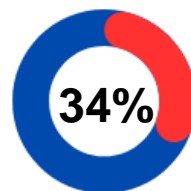
		Actions				
Assets		 Lock	 Encrypt	 Delete	 Steal	
Files		✗	✓	✓	✓	
Memory		✗	✓	✓	✓	
Folders		✗	✓	✓	✓	
Database Content		✗	✓	✓	✓	
MFT		✓	✓	✓	✗	
MBR		✓	✓	✓	✗	
Cloud		✗	✓	✓	✓	
CMS		✗	✓	✓	✗	
Screen		✓	✓	✓	✗	

Recent Statistics

Over 80% of the SMEs surveyed by ENISA stated that cybersecurity issues would have a **serious negative impact on their business** within a week of the cybersecurity incident happening. **SMEs** 

57% say they would most likely become bankrupt or go out of business.

Ransomware remains the most prevalent danger, making up **34%** of all threats in the European Union.



The demanded ransom in Europe grew from €13m in 2019 to **€62m** in 2021.

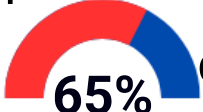


Ransomware targeted various sectors, with **manufacturing** (14%) & **health** (13%) topping the list, followed by **public administration** (11%) & **services** (9%).

The average downtime a company experienced in 2021 after a ransomware attack was 23 days.



Recent Statistics

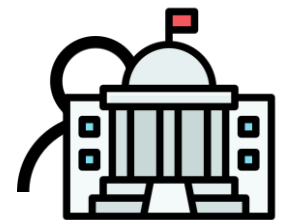
European healthcare services disruption in the period **January 2021 - March 2023** was related to ransomware threats  **65%** of the cases.



Social engineering attacks grew significantly in 2023 with **Artificial Intelligence (AI)** and new types of techniques are emerging, but **phishing** still remains the top attack vector.



Out of the **observed events related to social engineering**, **30 percent** were aimed at the **general public**, **18 percent** at public administration, and **8 percent** at all sectors.



SOLUTION

What is the name of the first known victim of the PHISHING ATTACK?

[Surname Name as seen in the employee list without space*]

C L U E L E S S

WHO MADE THE FRAUDULENT PAYMENT?

C L I C K A L I A C K

ENCRYPTION KEY

C L I C K L E S S

What is the filename of the decrypted file?

S E C U R E S M E