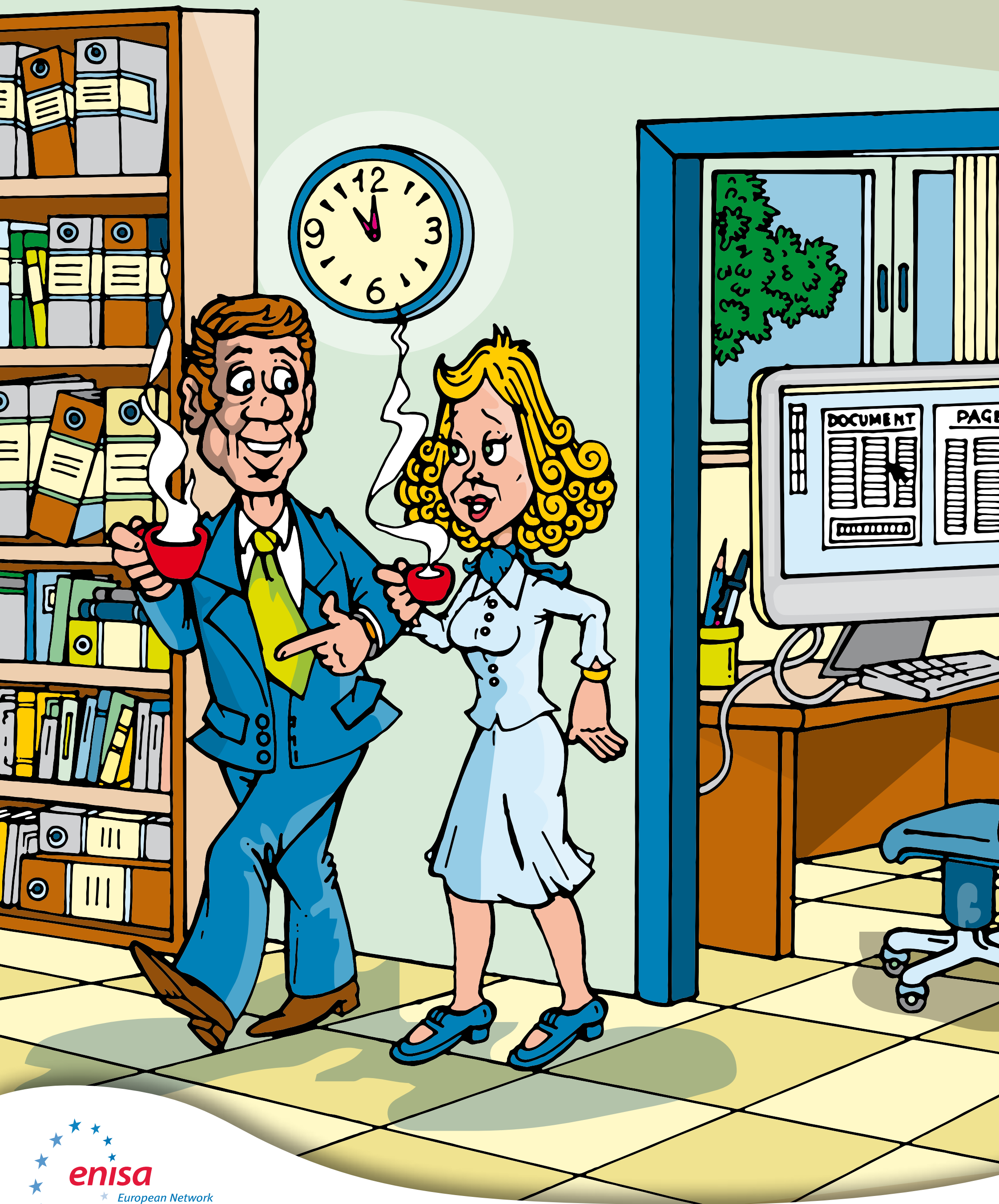




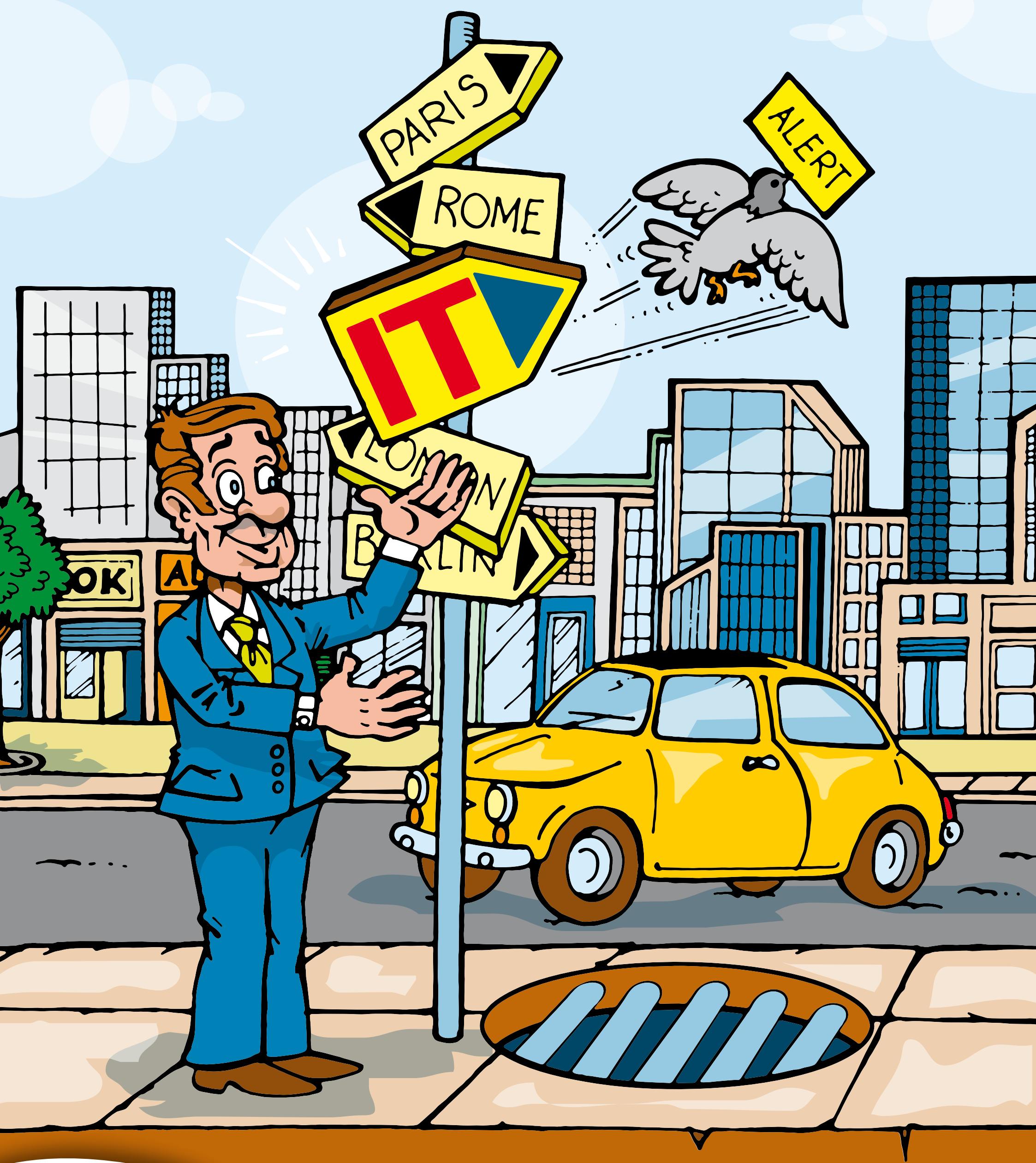
Keep your password safe!



**Avoid printing sensitive
data unless necessary!**



**Going for a coffee?
Lock your computer first!**



**Did you lose your PDA? Report it
to your IT department immediately!**



Visitors should be badged and escorted in the building at all times!



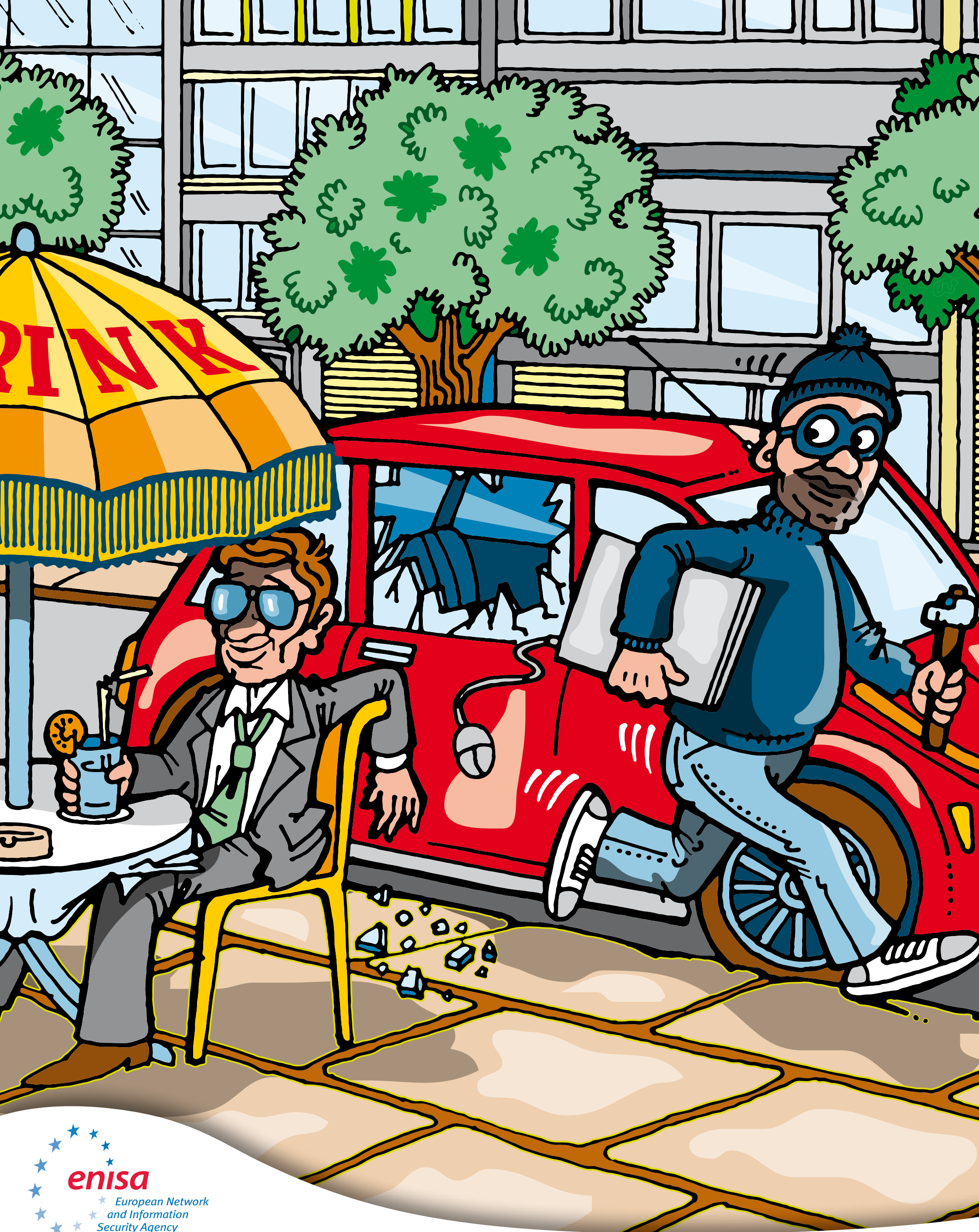
**...Don't make your
organisation's confidential
information available to everyone!**



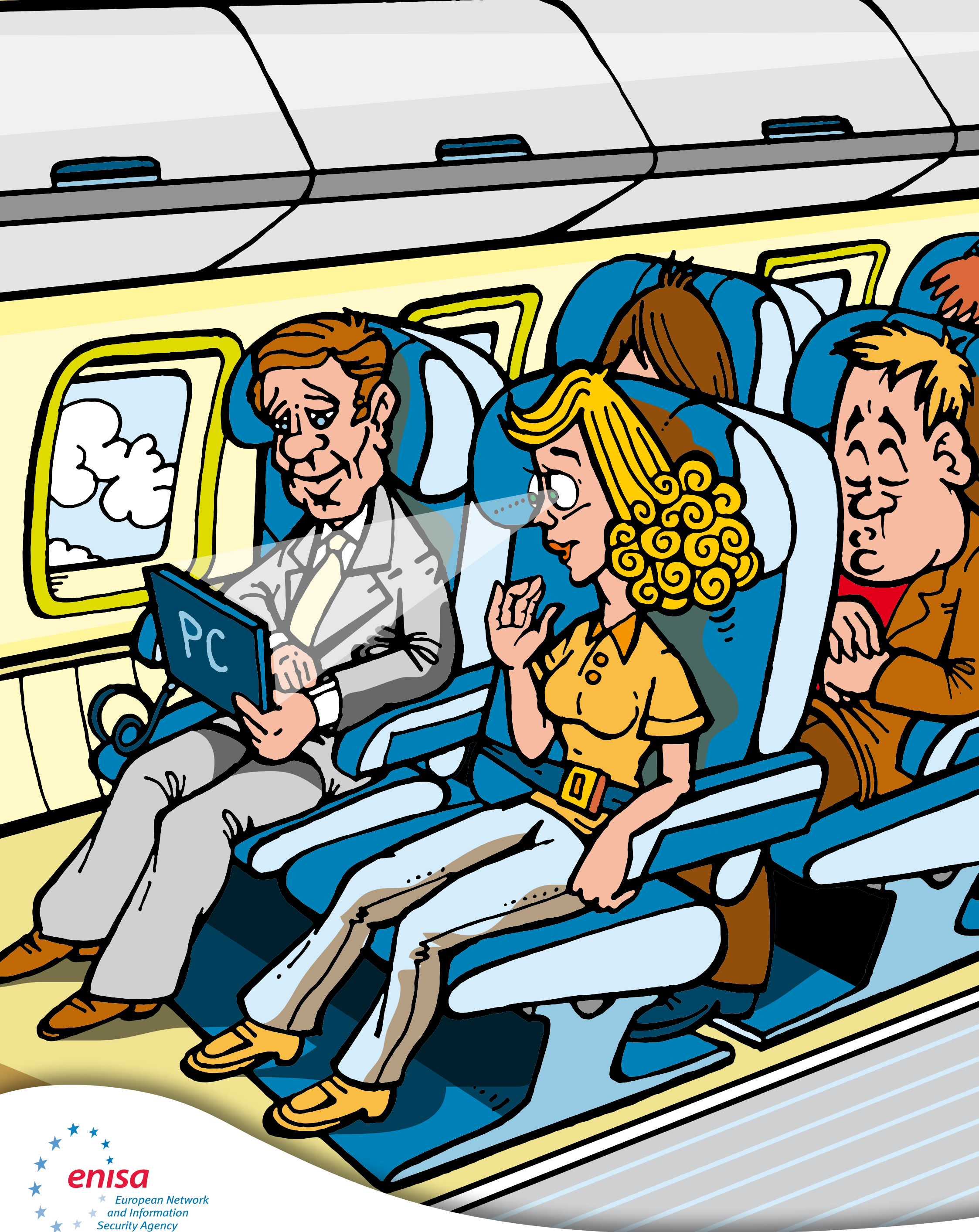
**Secure sensitive data
by keeping your desktop clean!**



Going home?
Log off from your computer!



**Don't leave your laptop
on view in the car!**



**Working while travelling?
Do it safely!**