

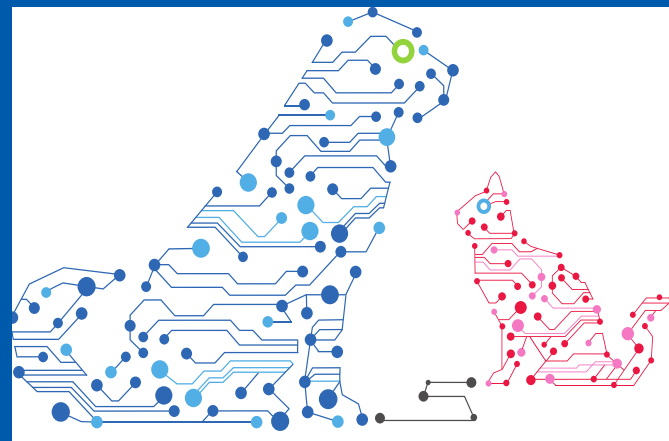


THE EU CYBERSECURITY AGENCY

PETs REPOSITORY COMMUNITY BUILDING AND EVALUATION

Evgenia Nikolouzou, Ph.D.
ENISA Data Security and Standardisation Unit

22 | 11 | 2018





WHY? WHAT? HOW?

Challenging to make the right choices for a given purpose.

- Comparing solutions to match criteria for a particular IT environment or user level is an emerging area.
- There is a need for a repository of Privacy Enhancing Technologies (PETs) and guidelines on how to use them

A repository and a standardized methodology for the evaluation of PETs could improve the situation

ENISA has presented a comprehensive methodology for PET maturity assessment

- Developed a web application prototype, PETs repository
 - This platform needs to be populated with experts and evaluations for testing

PETs PLATFORM

Become a tester!

Register
now at:



pets.enisa.europa.eu

The screenshot shows the homepage of the Privacy Enhancing Technologies (PET) maturity assessments repository. The browser address bar shows pets.enisa.europa.eu/#/home. The page features a navigation menu with 'HOME', 'METHODOLOGY', and 'REPOSITORY'. A prominent banner reads 'Join the community' with a 'GET STARTED' button. Below this, a 'Features' section highlights three key aspects: Repository, Application, and Community, each with an icon and a brief description.

Privacy Enhancing Technologies
maturity assessments repository

SIGN IN REGISTER

HOME METHODOLOGY REPOSITORY Have an issue? Send your feedback.

Join the community

Privacy Enhancing Technologies (PET)
maturity assessment repository

GET STARTED

Features

What makes PET maturity assessment repository unique:

- Repository**
Use the online repository to get information about Privacy Enhancing Technologies (PETs) maturity, readiness and quality. Use repository search features to get information about technologies matching best your privacy preserving goals.
- Application**
Use the web tool implementing methodology which guides experts through the assessment process. Start new PET assessment or join the board of experts for an ongoing one. Gather information on maturity and quality indicators.
- Community**
Join the worldwide community of experts contributing to the Privacy Enhancing Technologies maturity assessment. Share your knowledge and opinions. Lead or support PET assessments. Be a part of global research on digital data privacy.



ENISA METHODOLOGY

A two-dimensional assessment: **the so-called PET maturity**

PET maturity: technology readiness + privacy enhancement quality

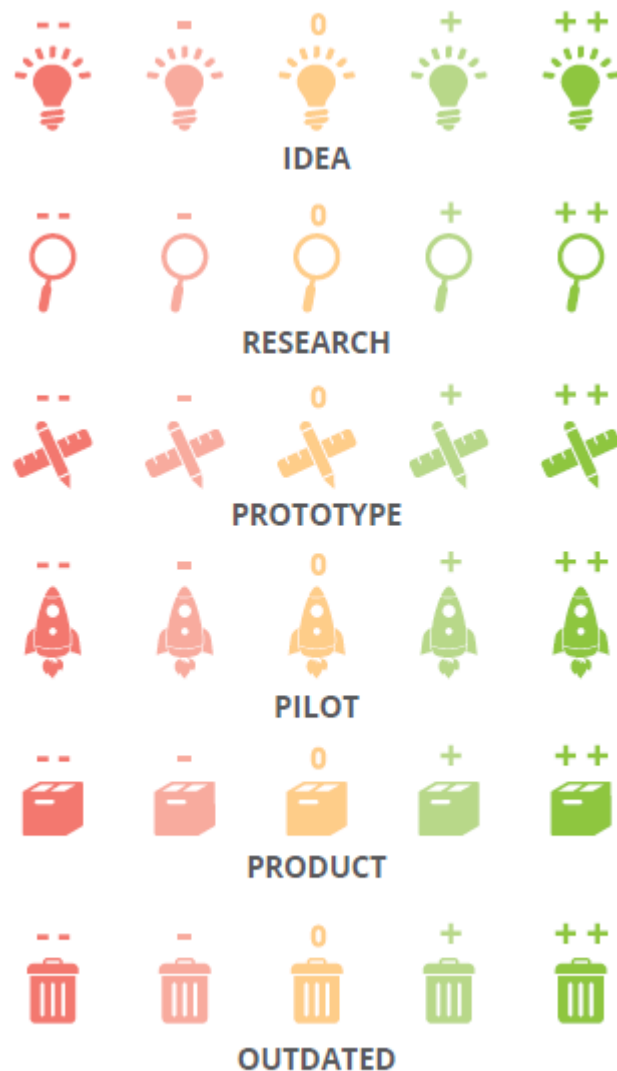
- **A scale for readiness**
 - Idea, Research, Proof-of-concept, pilot, Product, Outdated
- **A scale for nine PET quality characteristics, listed in decreasing order of importance**
 - Protection, Trust assumptions, Side effects, Reliability, Performance efficiency, Operability, Maintainability, Transferability, Scope
 - For each of these nine characteristics, a PET can receive a score in the range {-- (very poor) – (poor) 0 (satisfactory) + (good) ++ (very good)}
 - The overall quality level also utilises this five-value scale, and is comprised of the nine individual scores, according to a specific quality evaluation function

OVERVIEW OF POSSIBLE PET MATURITY LEVEL VALUES

This overall scale is simply the combination of:

readiness level ***quality level***

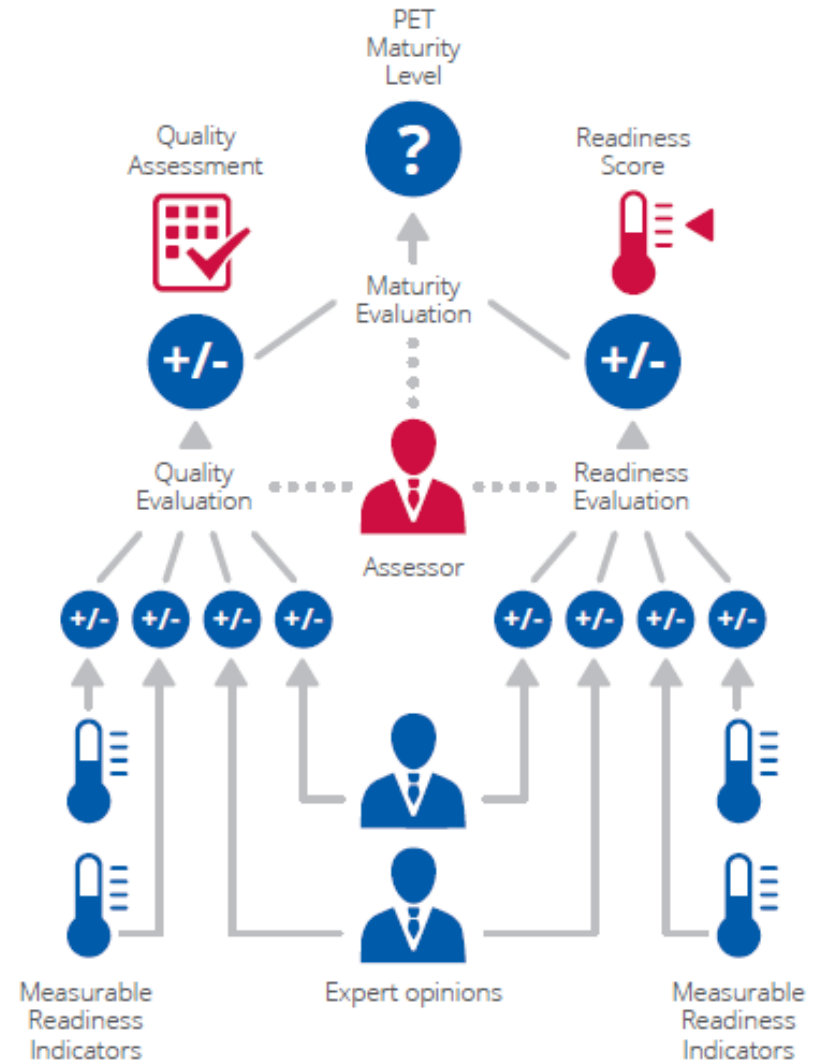
So for example, a PET with readiness level *pilot* and quality **+** has an overall PET maturity level of *pilot+*. Thus, the total set of potential PET maturity values spans from *idea--* and *idea++* to *outdated--* and *outdated++*.



CURRENT IMPLEMENTATION

Assessor, Experts

- Assessors can provide descriptions and initial sources of information. They can invite a board of experts
- Experts may concurrently assess the PET and submit their opinion.
- The assessor needs to reach consensus with the experts
- The platform supports the assessor to aggregate the different expert pinions and indicates conflicts.
- The consensus is published in the form of an assessment, which can be searched and consulted by the users of the platform.



BUILDING AND MAINTAIN AN ONLINE COMMUNITY

Final scope: an updated PETs repository populated with new content

- Engaging the privacy community into its use by providing a plan for its future enhancement and wider adoption
- **Goals**
 - Evaluate usability
 - Understand user requirements
 - Collect user feedback
 - Understand market needs
 - Fine tune the parameters
 - Allow for additional features or methods to be further integrated in





RECOMMENDATIONS FOR NEXT STEPS

Communication Strategy

Longer duration period: ENISA could set up a **permanent contact point** for these relevant key contacts.

Leverage the **existing social networks** for a viral marketing approach - **research opportunities with platforms like SourceForge**

Dedicated events: organize a **“Road Show”**

PR expert consultancy

Solving usability problems

Improve current look and feel and usability of the PETs maturity assessment platform

Improving security and security hardening of the platform

Distribution strategy

Reverse network effect: community platform becomes exponentially more attractive in relation to the number of active users

THANK YOU FOR YOUR ATTENTION

Vasilissis Sofias Str 1, Maroussi 151 24
Attiki, Greece

 +30 28 14 40 9711

 info@enisa.europa.eu

 www.enisa.europa.eu

